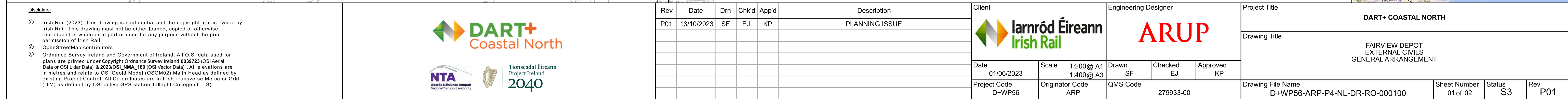
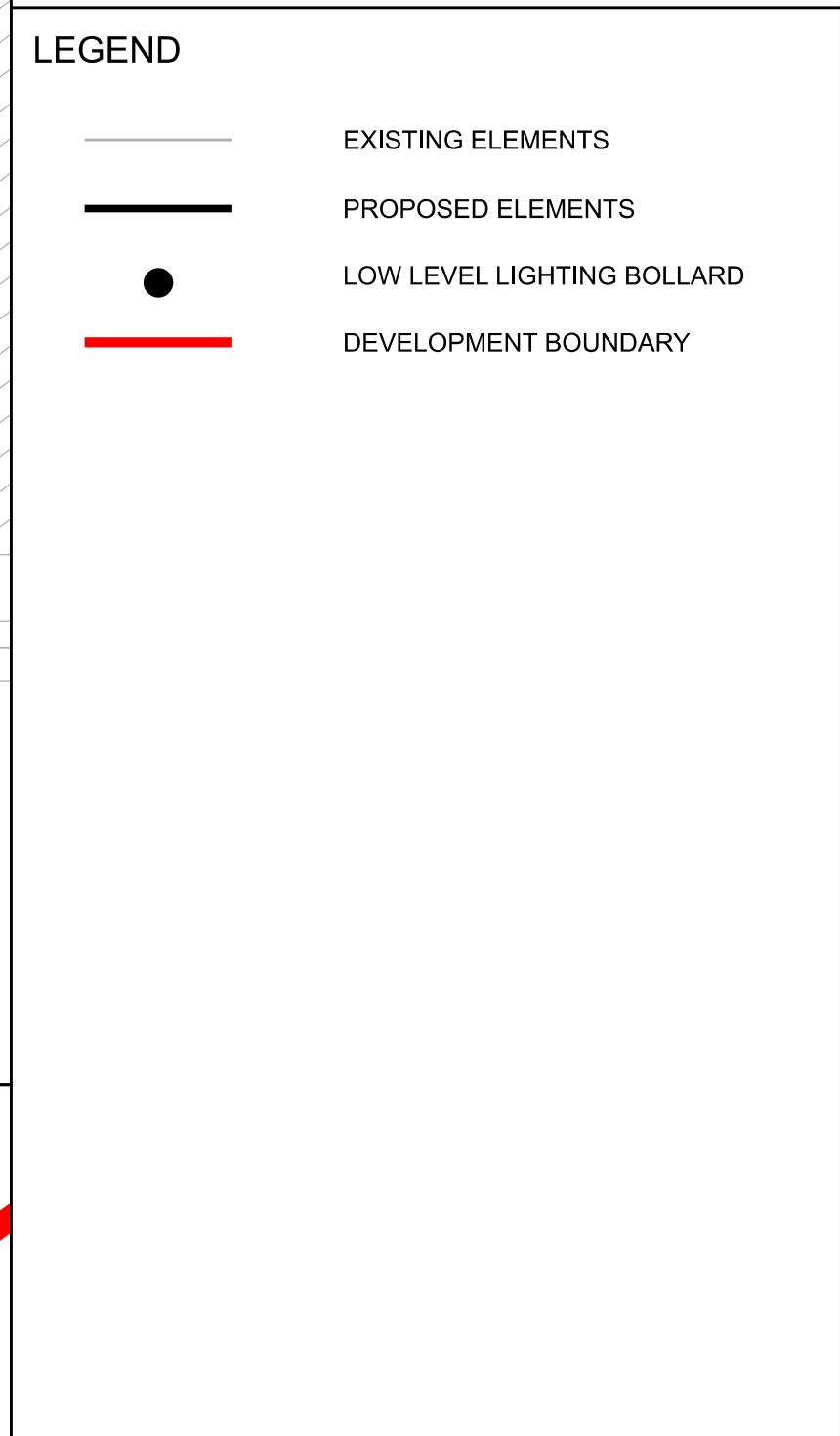
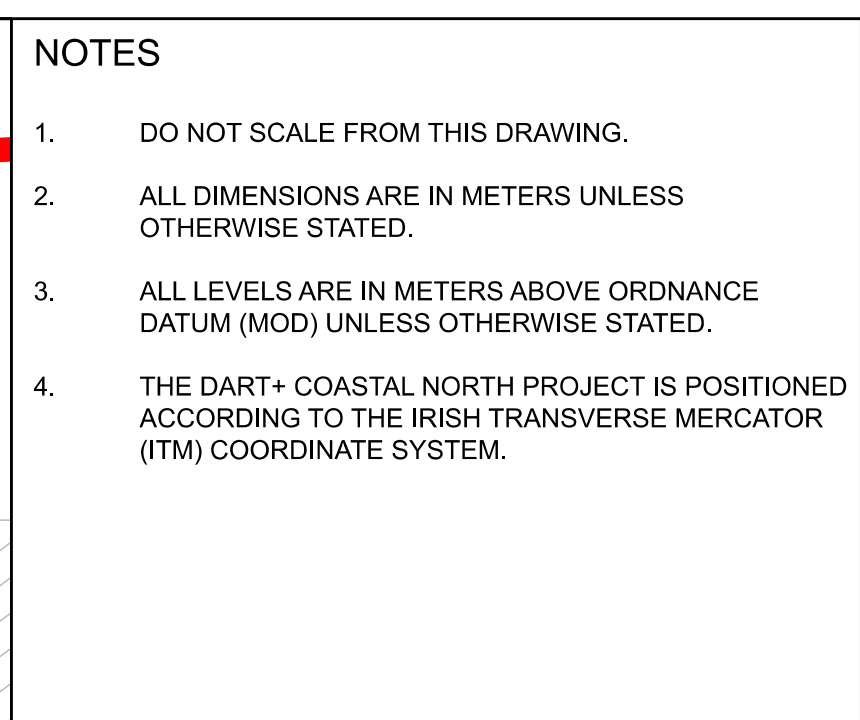


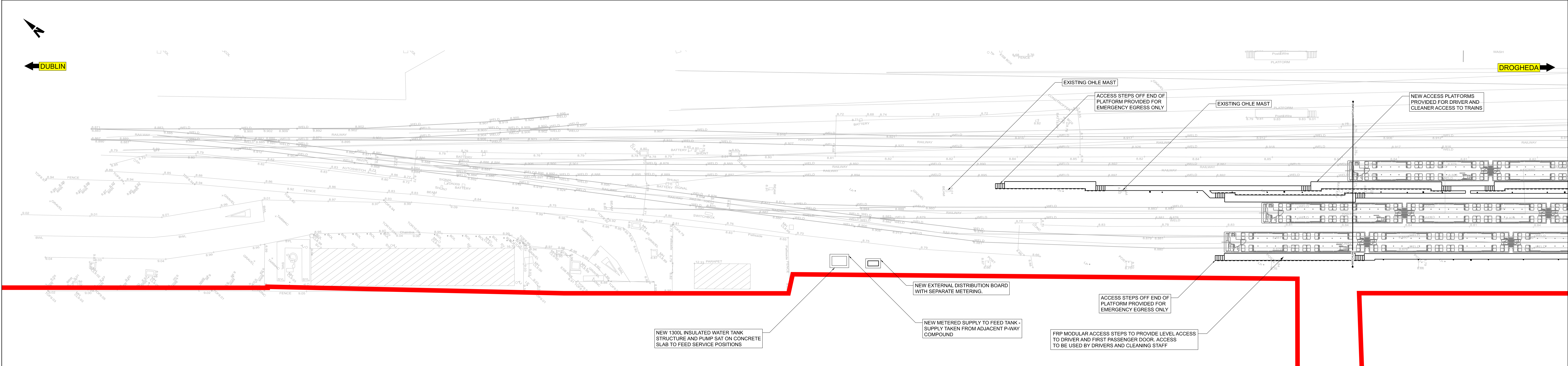
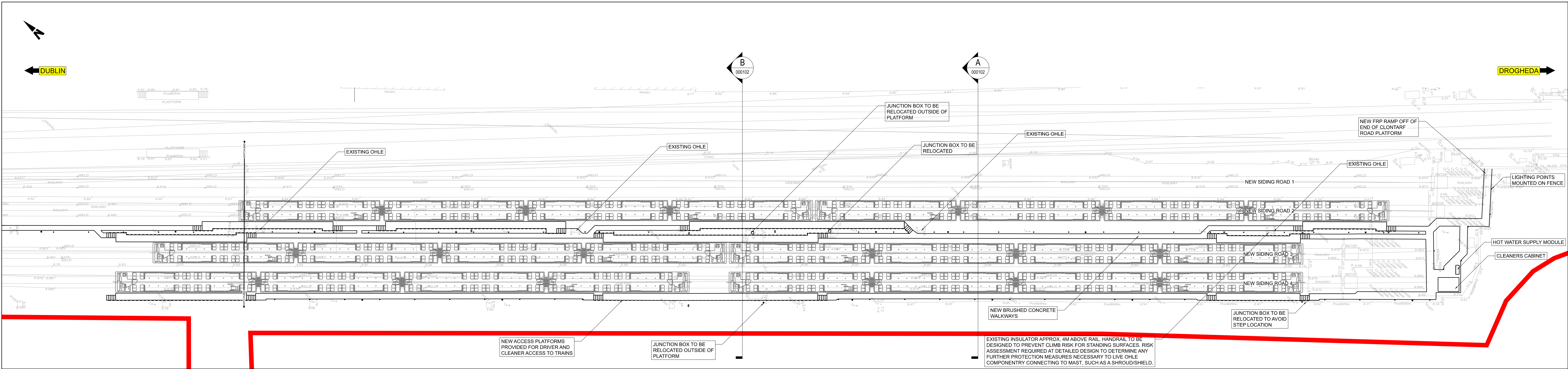
.....

SPECIFIC LOCATIONS

01 Fairview

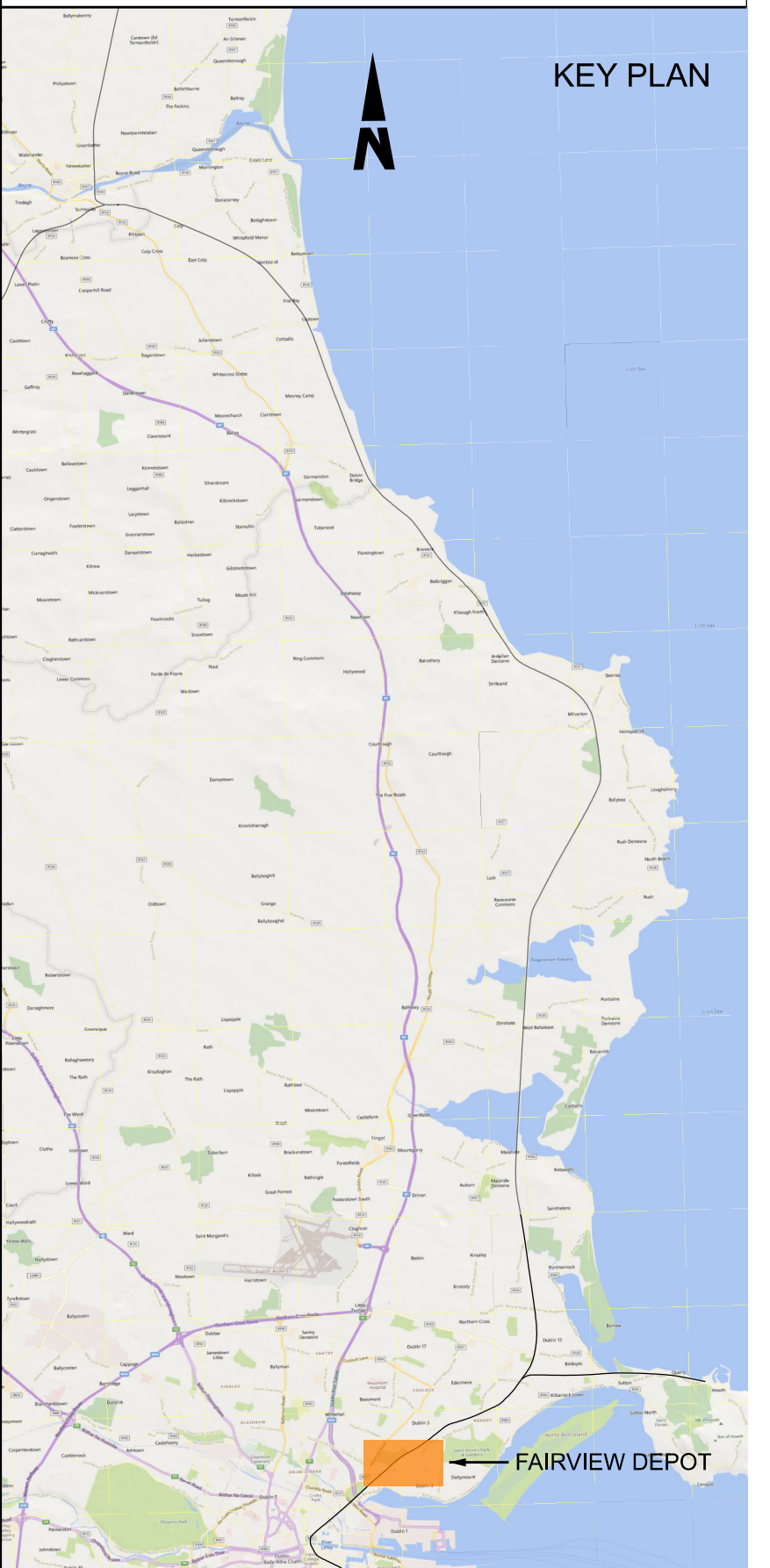
.....





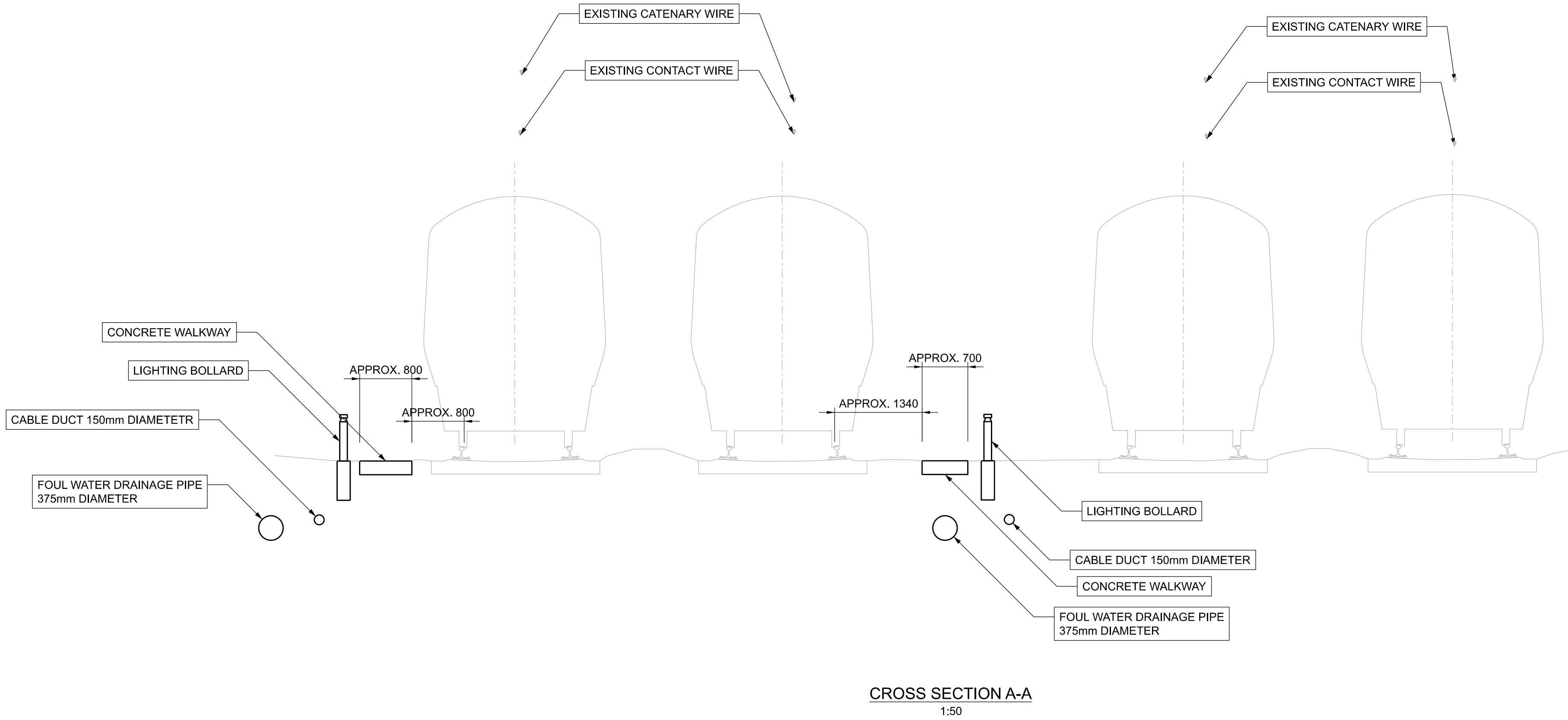
- NOTES
- DO NOT SCALE FROM THIS DRAWING.
 - ALL DIMENSIONS ARE IN METERS UNLESS OTHERWISE STATED.
 - ALL LEVELS ARE IN METERS ABOVE ORDNANCE DATUM (MOD) UNLESS OTHERWISE STATED.
 - THE DART+ COASTAL NORTH PROJECT IS POSITIONED ACCORDING TO THE IRISH TRANSVERSE MERCATOR (ITM) COORDINATE SYSTEM.

- LEGEND
- EXISTING ELEMENTS
 - PROPOSED ELEMENTS
 - DEVELOPMENT BOUNDARY
 - LOW LEVEL LIGHTING BOARD
 - SERVICE POINT

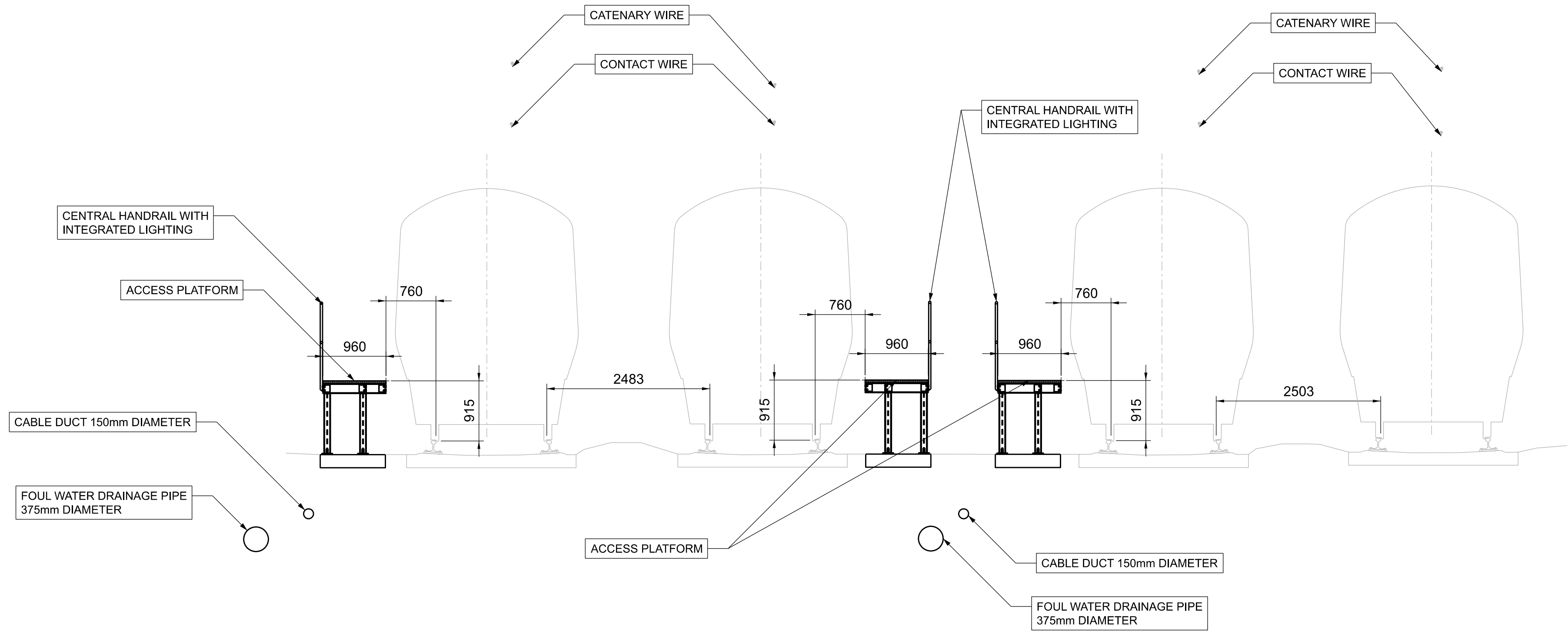


<p>Client</p> <p>Iarnród Éireann Irish Rail</p>		<p>Engineering Designer</p> <p>ARUP</p>		<p>Project Title</p> <p>DART+ COASTAL NORTH</p>	
<p>Date</p> <p>01/06/2023</p>		<p>Scale</p> <p>1:200 @ A1 +2 1:400 @ A3 +2</p>		<p>Drawing Title</p> <p>FAIRVIEW DEPOT EXTERNAL CIVILS GENERAL ARRANGEMENT</p>	
<p>Project Code</p> <p>D-WP56</p>		<p>Originator Code</p> <p>ARP</p>		<p>Drawing File Name</p> <p>D-WP56-ARP-P4-NL-DR-RO-000101</p>	
<p>Rev</p> <p>P01</p>		<p>Date</p> <p>13/10/2023</p>		<p>Sheet Number</p> <p>02 of 02</p>	
<p>Drn</p> <p>SF</p>		<p>Chk'd</p> <p>EJ</p>		<p>Status</p> <p>S3</p>	
<p>App'd</p> <p>KP</p>		<p>Description</p> <p>PLANNING ISSUE</p>		<p>Rev</p> <p>P01</p>	
<p>Backsaver</p> <p>© Irish Rail (2023). This drawing is confidential and the copyright in it is owned by Irish Rail. This drawing must not be either loaned, copied or otherwise reproduced in whole or in part or used for any purpose without the prior permission of Irish Rail.</p> <p>© Ordnance Survey Ireland and Government of Ireland. All O.S. data used for plans are printed under Copyright Ordnance Survey Ireland 0039723 (OSI Aerial Data or OSI Lidar Data) & 2023/OSI_NMA_180 (OSI Vector Data). All elevations are in metres and relate to OSI Geoid Height (OSGM02). Main Head is defined by existing Project Control. All Co-ordinates are in Irish Transverse Mercator Grid (ITM) as defined by OSI active GPS station Tallaght College (TLTG).</p>		<p>Client</p> <p>Iarnród Éireann Irish Rail</p>		<p>Engineering Designer</p> <p>ARUP</p>	
<p>Project Code</p> <p>D-WP56</p>		<p>Originator Code</p> <p>ARP</p>		<p>Drawing File Name</p> <p>D-WP56-ARP-P4-NL-DR-RO-000101</p>	
<p>Rev</p> <p>P01</p>		<p>Date</p> <p>13/10/2023</p>		<p>Sheet Number</p> <p>02 of 02</p>	
<p>Drn</p> <p>SF</p>		<p>Chk'd</p> <p>EJ</p>		<p>Status</p> <p>S3</p>	
<p>App'd</p> <p>KP</p>		<p>Description</p> <p>PLANNING ISSUE</p>		<p>Rev</p> <p>P01</p>	

DO NOT SCALE USE FIGURED DIMENSIONS ONLY



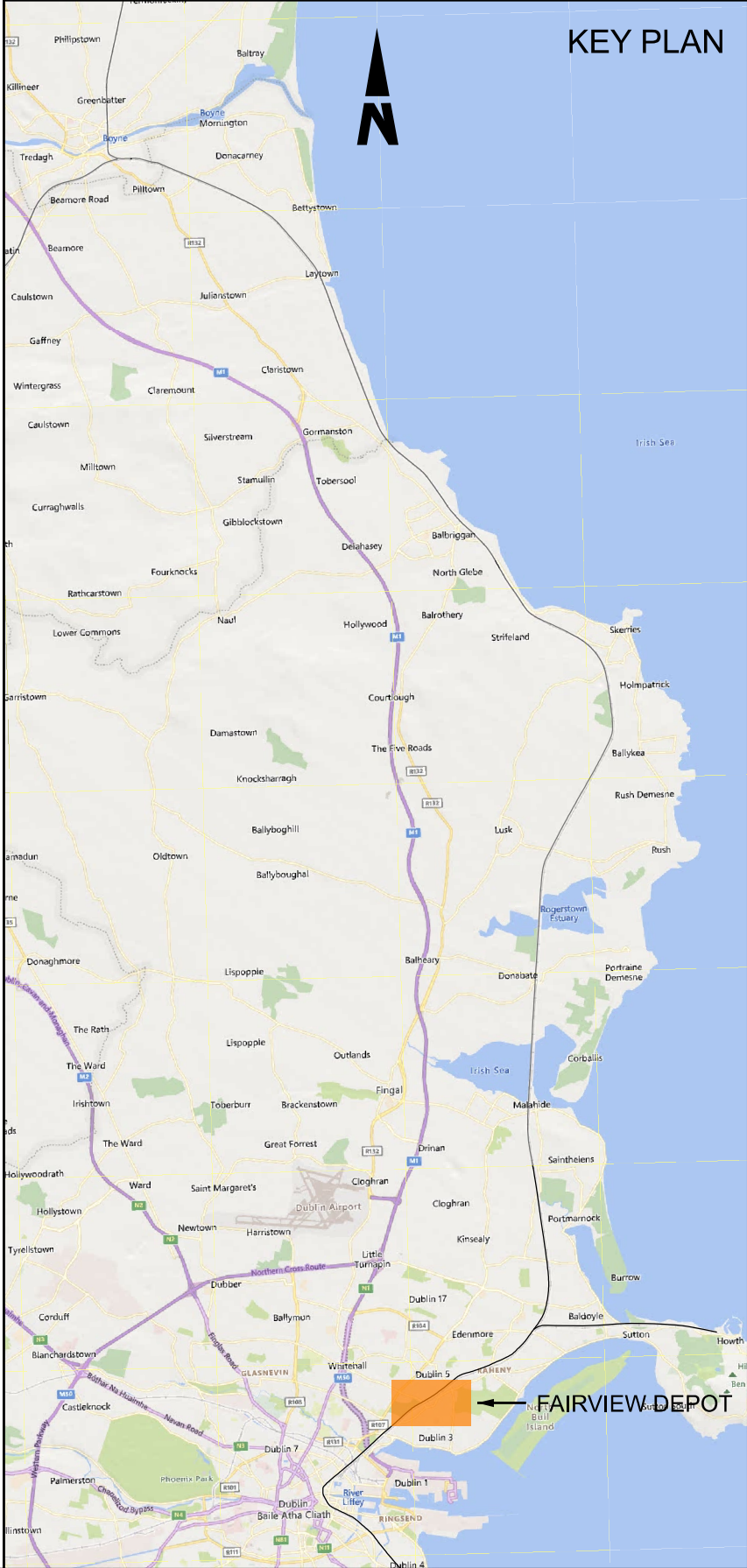
CROSS SECTION A-A
1:50



CROSS SECTION B-B
1:50

- NOTES
- DO NOT SCALE FROM THIS DRAWING.
 - ALL DIMENSIONS ARE IN MILLIMETERS UNLESS OTHERWISE STATED.
 - ALL LEVELS ARE IN METERS ABOVE ORDNANCE DATUM (MOD) UNLESS OTHERWISE STATED.
 - THE DART+ COASTAL NORTH PROJECT IS POSITIONED ACCORDING TO THE IRISH TRANSVERSE MERCATOR (ITM) COORDINATE SYSTEM.

- LEGEND
- EXISTING ELEMENTS
 - PROPOSED ELEMENTS



Disclaimer

© Irish Rail (2023). This drawing is confidential and the copyright in it is owned by Irish Rail. This drawing must not be either loaned, copied or otherwise reproduced in whole or in part or used for any purpose without the prior permission of Irish Rail.

© OpenStreetMap contributors

© Ordnance Survey Ireland and Government of Ireland. All O.S. data used for plans are printed under Copyright Ordnance Survey Ireland 0039723 (OSI Aerial Data or OSI Lidar Data) & 2023/OSI_NMA_180 (OSI Vector Data). All elevations are in metres and relate to OSI Geoid Model (OSGM02) Mean Head as defined by existing Project Control. All Co-ordinates are in Irish Transverse Mercator Grid (ITM) as defined by OSI active GPS station Tallaght College (TLTG).



Rev	Date	Dm	Chk'd	App'd	Description
P01	13/10/2023	SF	EJ	KP	PLANNING ISSUE



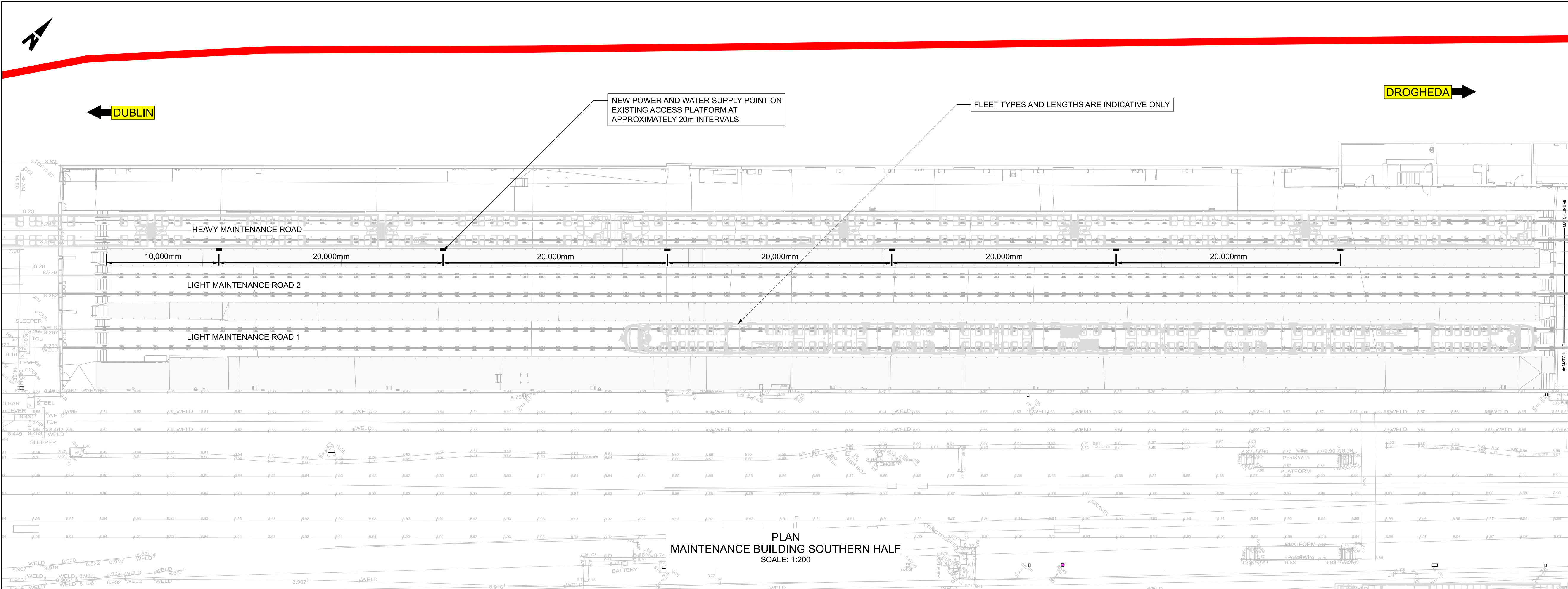
Date	01/06/2023
Project Code	D+WP56

Scale	1:200@ A1 1:400@ A3
Originator Code	ARP

Drawn	SF
Checked	EJ
Approved	KP
QMS Code	279933-00

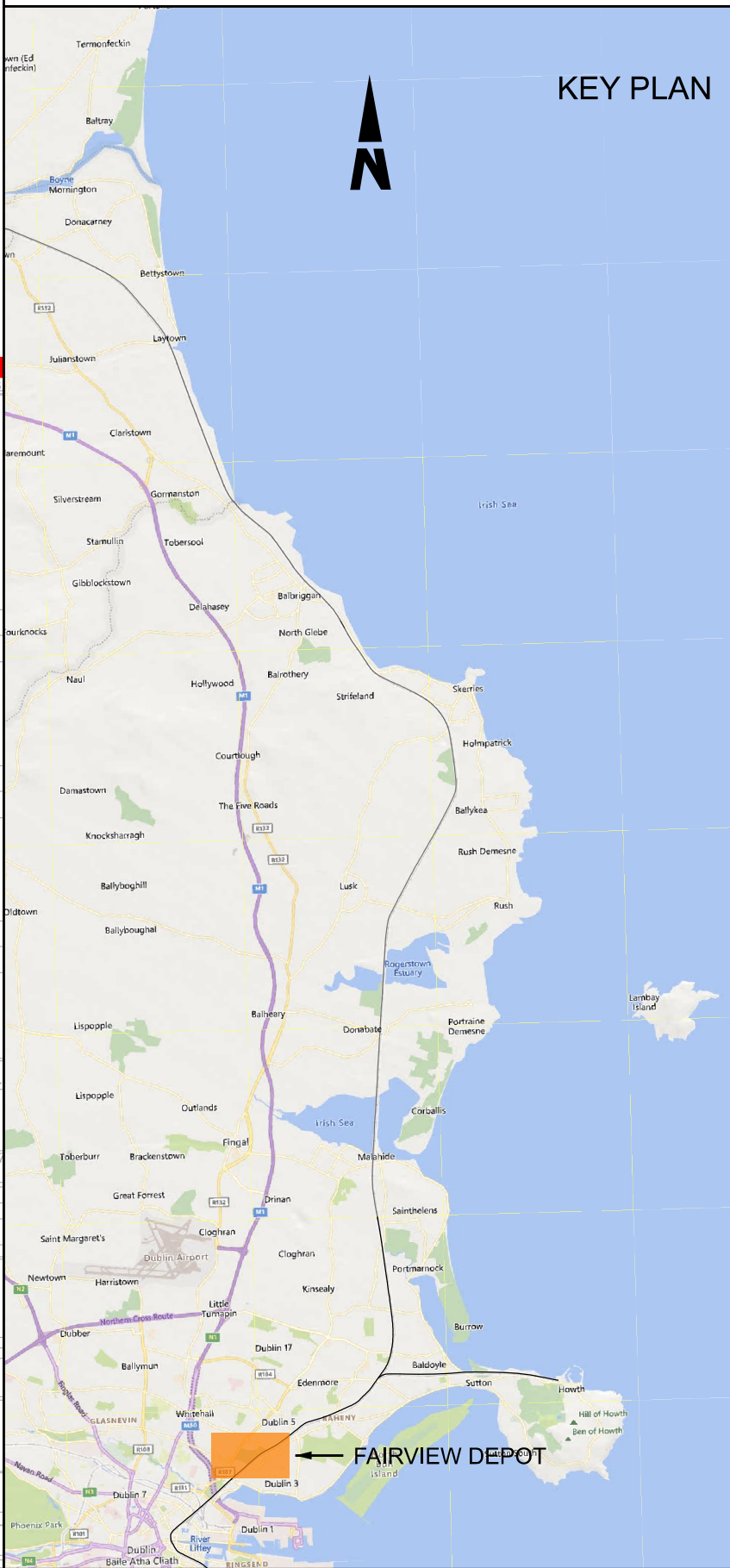
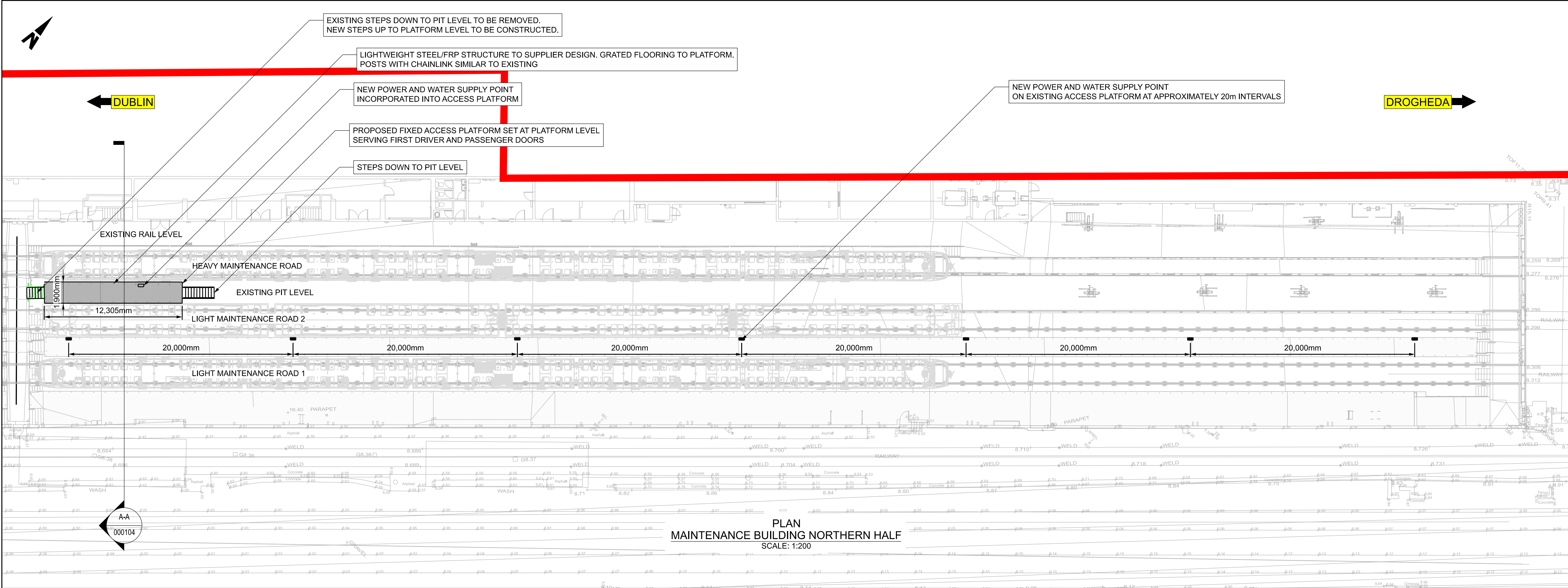
Project Title	DART+ COASTAL NORTH			
Drawing Title	FAIRVIEW DEPOT EXTERNAL CIVILS SECTIONS			
Drawing File Name	D+WP56-ARP-P4-NL-DR-RO-000102	Sheet Number	01 of 01	Rev
		Status	S3	P01

DO NOT SCALE USE FIGURED DIMENSIONS ONLY



- NOTES:
- DO NOT SCALE FROM THIS DRAWING.
 - ALL DIMENSIONS ARE IN METERS UNLESS OTHERWISE STATED.
 - ALL LEVELS ARE IN METRES ABOVE ORDINANCE DATUM (MOD) UNLESS OTHERWISE STATED.
 - THE DART+ COASTAL NORTH PROJECT IS POSITIONED ACCORDING TO THE IRISH TRANSVERSE MERCATOR (ITM) COORDINATE SYSTEM.

- LEGEND:
- DEVELOPMENT BOUNDARY
 - PROPOSED ELEMENTS
 - EXISTING ELEMENTS
 - ELEMENTS TO BE REMOVED



Disclaimer

© Irish Rail (2023). This drawing is confidential and the copyright in it is owned by Irish Rail. This drawing must not be either loaned, copied or otherwise reproduced in whole or in part or used for any purpose without the prior permission of Irish Rail.

© OpenStreetMap contributors

© Ordnance Survey Ireland and Government of Ireland. All O.S. data used for plans are printed under Copyright Ordnance Survey Ireland 0039723 (OSI Aerial Data or OSI Lidar Data) & 2023/OSI NMA 180 (OS Vector Data). All elevations are in metres and relate to OSI Geoid Model (OSGM02) Mean Head as defined by existing Project Control. All Co-ordinates are in Irish Transverse Mercator Grid (ITM) as defined by OSI active GPS station Tallaght College (TLLG).



Rev	Date	Dm	Chk'd	App'd	Description
P01	13/10/2023	SF	KP	DB	PLANNING ISSUE

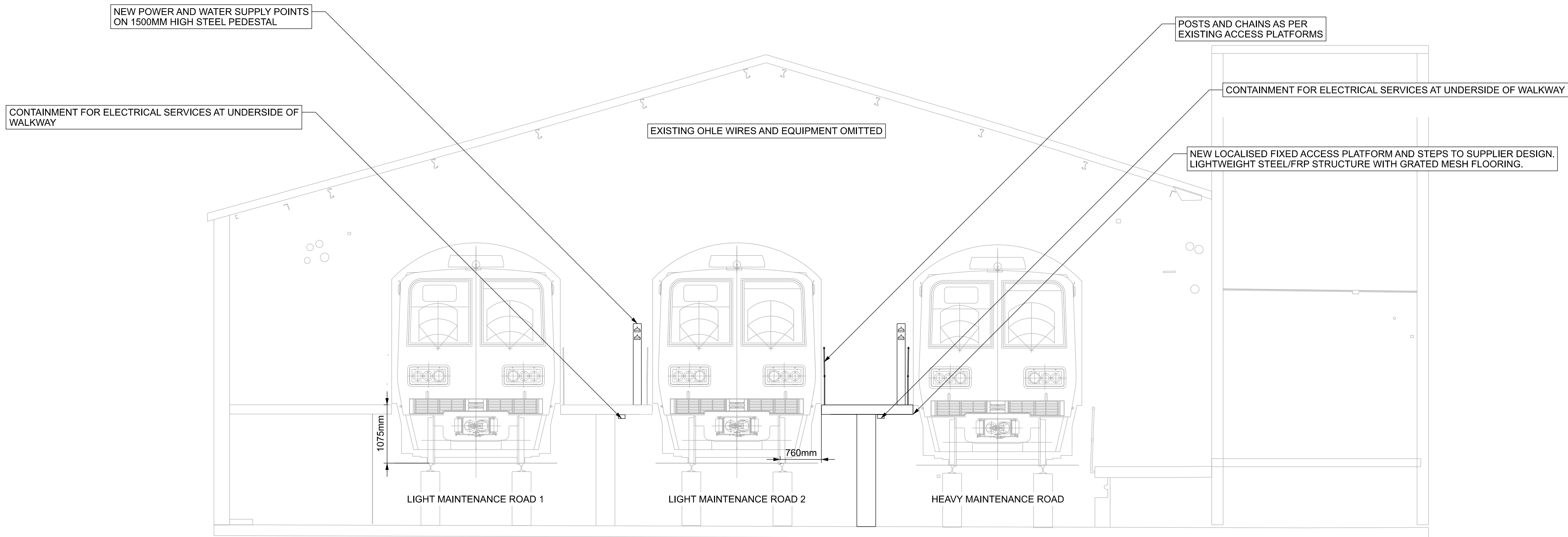
Client		Engineering Designer		
Date	01/06/2023	Scale	1:200@ A1 1:400@ A3	Drawn SF
Project Code	D+WP56	Originator Code	ARP	Checked KP
		QMS Code	279933-00	Approved DB

Project Title			
DART+ COASTAL NORTH			
Drawing Title			
FAIRVIEW DEPOT MAINTENANCE BUILDING GENERAL ARRANGEMENT			
Drawing File Name		Sheet Number	Status
D+WP56-ARP-P4-NL-DR-RO-000103		01 of 01	S3
		Rev	P01

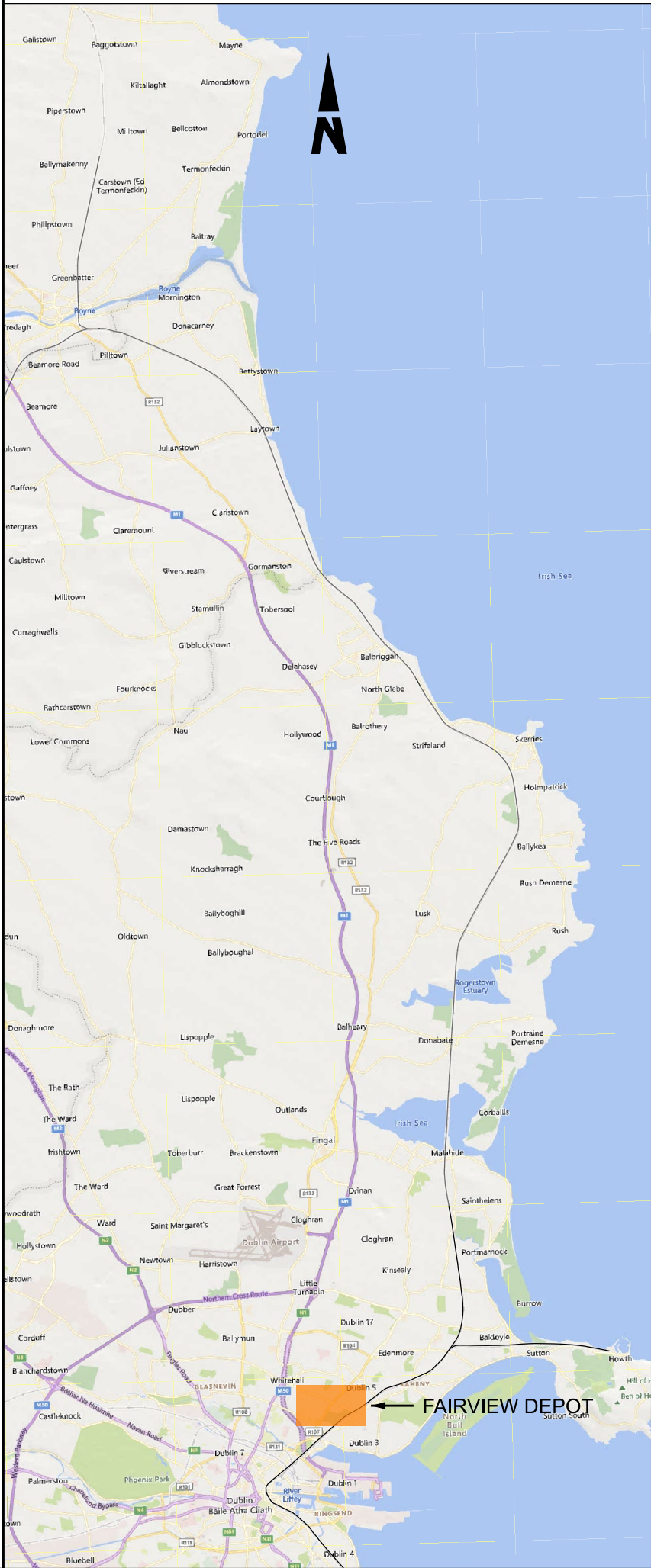
DO NOT SCALE USE FIGURED DIMENSIONS ONLY

- NOTES:
- ALL DIMENSIONS ARE SHOWN IN MILLIMETERS UNLESS NOTED OTHERWISE.
 - ALL LEVELS ARE SHOWN IN METERS ABOVE ORDINANCE DATUM.
 - DO NOT SCALE FROM THIS DRAWING.

- LEGEND:
- PROPOSED ELEMENTS
- EXISTING ELEMENTS



CROSS SECTION A-A
SCALE: 1:50



Disclaimer

© Irish Rail (2023). This drawing is confidential and the copyright in it is owned by Irish Rail. This drawing must not be either loaned, copied or otherwise reproduced in whole or in part or used for any purpose without the prior permission of Irish Rail.

© OpenStreetMap contributors

© Ordnance Survey Ireland and Government of Ireland. All O.S. data used for plans are printed under Copyright Ordnance Survey Ireland 0039723 (OSI Aerial Data or OSI LIDAR Data) & 2023/OSI_NMA_100 (OSI Vector Data). All elevations are in metres and relate to OSI Geoid Model (OSGM02) Mean Head as defined by existing Project Control. All Co-ordinates are in Irish Transverse Mercator Grid (ITM) as defined by OSI active GPS station Tallaght College (TLLG).

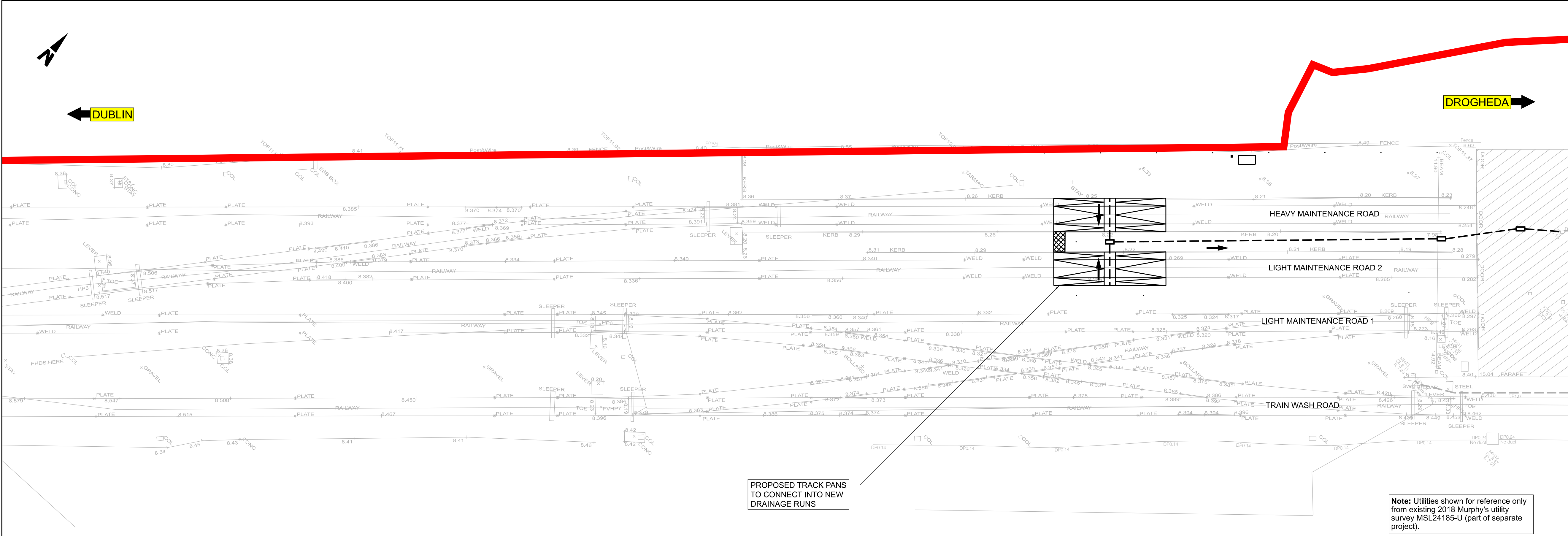


Rev	Date	Drm	Chk'd	App'd	Description
P01	13/10/2023	SF	KP	DB	PLANNING ISSUE

Client		Engineering Designer		
Date	01/06/2023	Scale	1:50 @ A1 1:100 @ A3	
Project Code	D+WP56	Originator Code	ARP	
QMS Code		279933-00	Drawn SF	Checked KP Approved DB

Project Title			
DART+ COASTAL NORTH			
Drawing Title			
FAIRVIEW DEPOT MAINTENANCE BUILDING CROSS SECTION			
Drawing File Name	D+WP56-ARP-P4-NL-DR-RO-000104	Sheet Number	01 of 01
Status	S3	Rev	P01

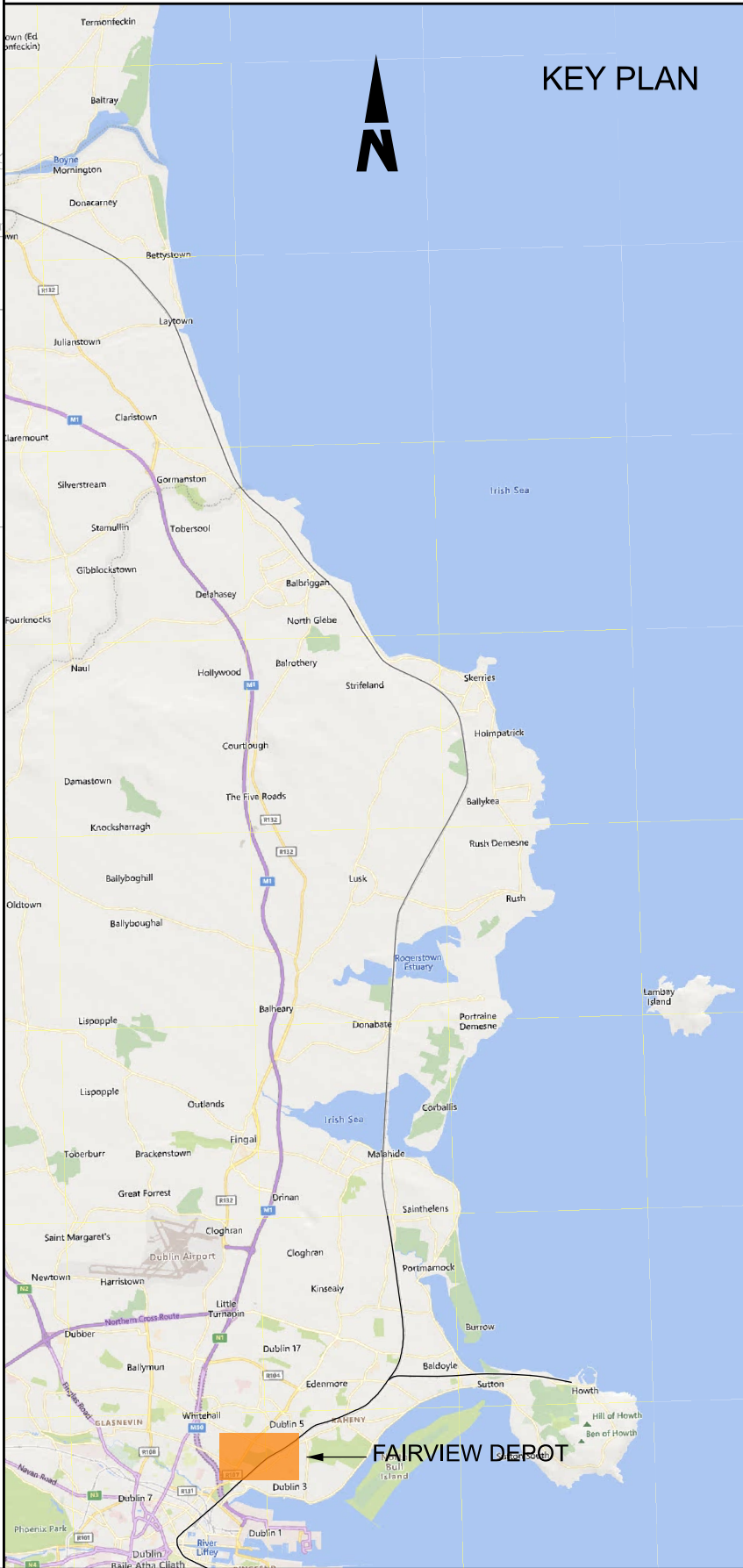
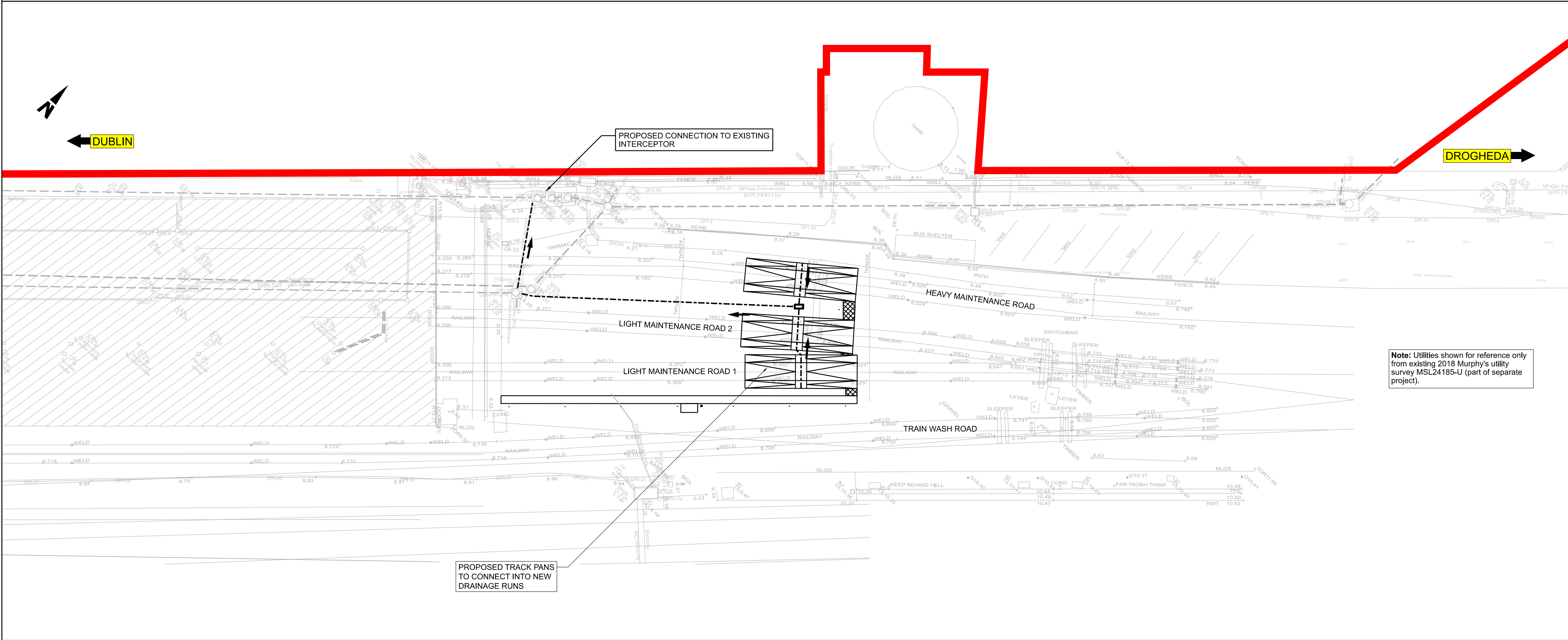
DO NOT SCALE USE FIGURED DIMENSIONS ONLY



- NOTES
- DO NOT SCALE FROM THIS DRAWING.
 - ALL DIMENSIONS ARE IN METERS UNLESS OTHERWISE STATED.
 - ALL LEVELS ARE IN METERS ABOVE ORDNANCE DATUM (MOD) UNLESS OTHERWISE STATED.
 - THE DART+ COASTAL NORTH PROJECT IS POSITIONED ACCORDING TO THE IRISH TRANSVERSE MERCATOR (ITM) COORDINATE SYSTEM.

LEGEND

- PROPOSED DRAINAGE
- o- PROPOSED MANHOLE
- - - EXISTING DRAINAGE
- ← DRAINAGE FLOW DIRECTION
- DEVELOPMENT BOUNDARY
- EXISTING ELEMENT
- PROPOSED ELEMENT



<div>Disclaimer</div> <div><div><div>© Irish Rail (2023). This drawing is confidential and the copyright in it is owned by Irish Rail. This drawing must not be either loaned, copied or otherwise reproduced in whole or in part or used for any purpose without the prior permission of Irish Rail.</div><div>© OpenStreetMap contributors</div><div>© Ordnance Survey Ireland and Government of Ireland. All O.S. data used for plans are printed under Copyright Ordnance Survey Ireland 0039723 (OSi Aerial Data or OSi Lidar Data) & 2023/OSi NMA 100 (OSi Vector Data). All elevations are in metres and relate to OSi Geoid Model (OSGM02) Mean Head as defined by existing Project Control. All Co-ordinates are in Irish Transverse Mercator Grid (ITM) as defined by OSi active GPS station Tallaght College (TLLG).</div></div></div>	<div><div><div><div></div><div>DART+</div><div>Coastal North</div></div><div><div><div><div>NTA</div><div>Gaeilge Náisiúnta Comhartha</div><div>National Transport Authority</div></div><div><div><div></div><div>Tionscadal Éireann</div><div>Project Ireland</div></div><div>2040</div></div></div></div></div></div>	<div><div>Rev</div><div>Date</div><div>Dm</div><div>Chk'd</div><div>App'd</div><div>Description</div></div>	<div><div>Client</div><div><div><div></div><div>Iarnród Éireann</div><div>Irish Rail</div></div><div>ARUP</div></div></div>	<div>Engineering Designer</div>				<div>Project Title</div> <div>DART+ COASTAL NORTH</div>								
		<div><div>P01</div><div>13/10/2023</div><div>SF</div><div>EJ</div><div>KP</div><div>PLANNING ISSUE</div></div>					<div>Drawing Title</div> <div>FAIRVIEW DEPOT DRAINAGE GENERAL ARRANGEMENT</div>									
								<div>Date</div> <div>01/06/2023</div>	<div>Scale</div> <div>1:200@ A1 1:400@ A3</div>	<div>Drawn</div> <div>SF</div>	<div>Checked</div> <div>EJ</div>	<div>Approved</div> <div>KP</div>				
								<div>Project Code</div> <div>D+WP56</div>	<div>Originator Code</div> <div>ARP</div>	<div>QMS Code</div> <div>279933-00</div>			<div>Drawing File Name</div> <div>D+WP56-ARP-P4-NL-DR-RO-000105</div>	<div>Sheet Number</div> <div>01 of 02</div>	<div>Status</div> <div>S3</div>	<div>Rev</div> <div>P01</div>

